



Canadian Food  
Inspection Agency

Agence canadienne  
d'inspection des aliments

# Update on Invasive Plants Program

**Canadian Weed Science Society Annual Meeting  
Winnipeg, Manitoba November 22, 2023**

Wendy Asbil, National Manager,  
Invasive Alien Species and Domestic Programs  
Plant Protection Division



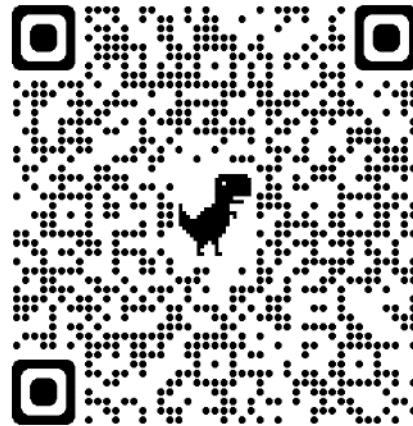
Canada



# Invasive Plants Program

**Nationally** prevent the introduction and spread of terrestrial plants that could threaten Canada's plant resource base (agriculture, forestry, environment) and the economy.

- Currently have 21 regulated pest plants
- Focus on prevention of species that are not present/ have limited distribution.
- Specific requirements based on pathway, risk mitigation measures or end-uses



# Invasive Plants Program

## Continued enhancement

- Add species to list of regulated pest plants based on risk analysis
- Update directive D-12-01: Phytosanitary Requirements to Prevent the Introduction of Plants Regulated as Pests in Canada
- Consider prohibiting import of species of concern until regulatory decision is made
- Stakeholder engagement through social media, consultations, education and outreach



# Updates on selected regulated invasive plants

**Kudzu (*Pueraria montana*):** perennial vine, rapid growth

- 1 site in Ontario
- Completed year 9 of 10 year eradication plan



**Japanese stiltgrass (*Microstegium vimineum*):** shade tolerant grass

- Found in several locations in close proximity in Ontario
- Survey and eradication efforts continue at all sites.



**Jointed goatgrass (*Aegilops cylindrica*):** Invasive grass, competes and can hybridize with wheat

- Found in a few locations in Ontario and British Columbia
- Sites in Ontario already eradicated
- British Columbia eradication ongoing



# Updates on selected regulated invasive plants

**Giant reed (*Arundo donax*):** Perennial grass, dominates moist soils in ditches, rivers, floodplains etc.

- Ornamental and biofuel interest
- Several small populations found in residential areas.
- Please continue to report sightings to CFIA



**Iron yam (*Dioscorea polystachya*):** Perennial climbing vine that rapidly invades undisturbed habitats.

- Human consumption and ornamental interest
- Import of viable propagative parts is prohibited (non-viable permitted)
- Contact CFIA if seen in a garden centre, in nature or as a viable product in the grocery store!





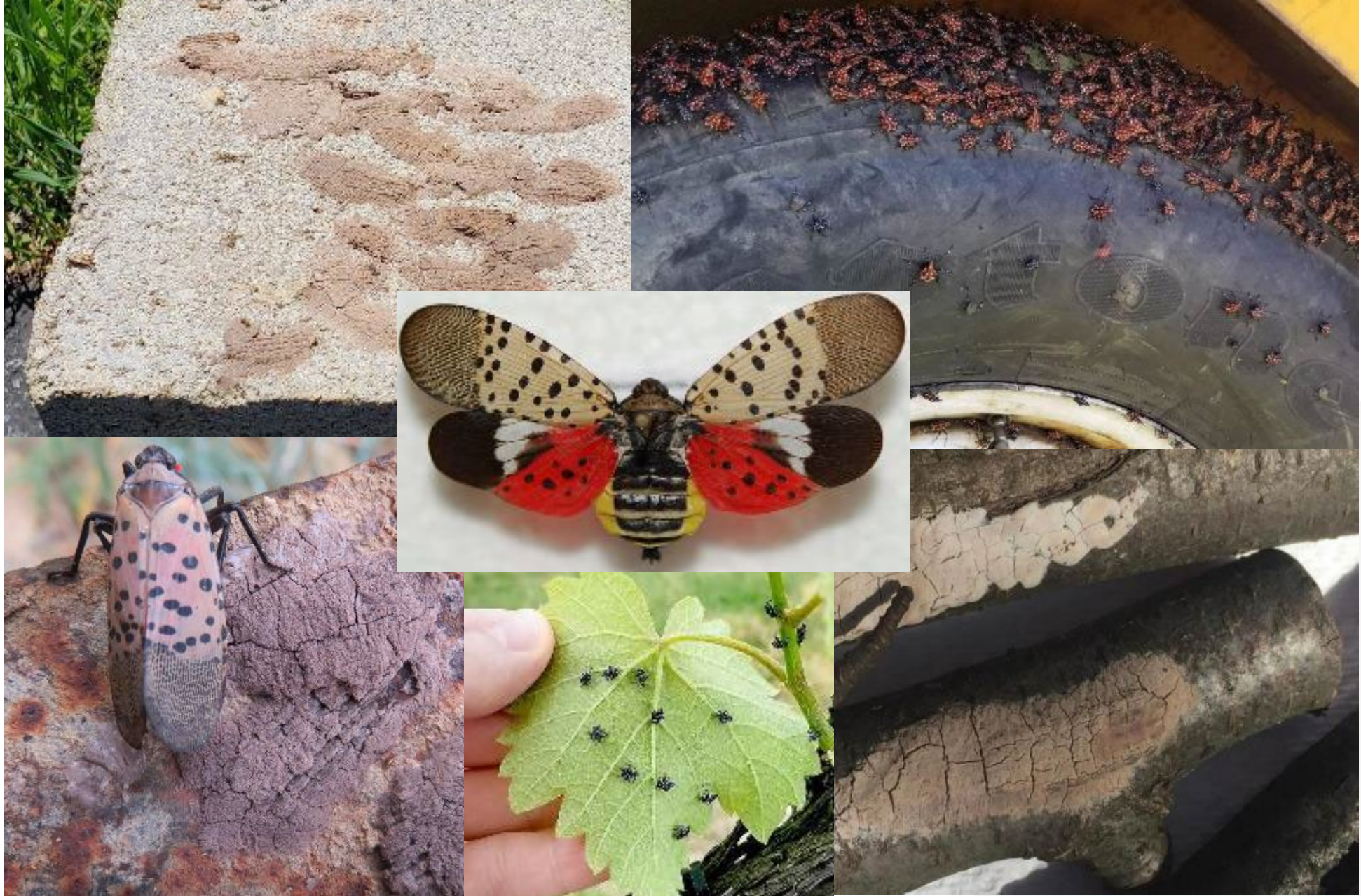
# Partnerships and Stakeholder Engagement

**Everyone has a role to play in preventing the introduction and spread of invasive plants**

- Augment invasive pest surveys – reporting pests
- Share information and expertise
- Collaborate on research that supports regulatory decisions
- Raise awareness, develop and distribute educational material
- Always a need for treatment options for invasive plants and for various circumstances
- **Shared risk and shared responsibility to act quickly on new invasive pests!**



# Spotted lanternfly: update



# Thank you. Questions, Comments?

For more information on invasive plants, please contact:  
**CFIA-IAS\_ACIA-EEE@inspection.gc.ca**

To report a suspected regulated invasive plants, please contact  
your local CFIA office.

Sign up for the Invasive Species Listserv on our website at:  
**www.inspection.gc.ca**

